



THE TRADE HUB INDONESIA



TRADE, DEVELOPMENT &
THE ENVIRONMENT HUB

UK Research
and Innovation





The Trade, Development and the Environment Hub (TRADE Hub)

Balancing economic growth driven by trade in wild species and agricultural commodities with associated socio-economic and environmental impacts is an intractable challenge in the implementation of sustainable trade. To overcome this challenge, the Trade, Development and the Environment Hub (TRADE Hub) will study at trade in various wildlife and agricultural commodities. The research project is funded by the UK Research and Innovation Global Challenges Research Fund¹ and led by the UN Environment Programme World Conservation Monitoring Centre (UNEP-WCMC)².

The TRADE Hub will have research activities in nine countries: The United Kingdom, Brazil, Cameroon, China, Democratic Republic of Congo, Gabon, Indonesia, Republic of Congo, and Tanzania. The hub consists of 50 organizations spread in 15 countries, including six partner organizations in Indonesia, that will work closely with international and regional trade bodies and private sectors to design targeted recommendations for the public policy and private practices, ensuring the impact of the research and creating sustainable change.

The TRADE Hub project runs for 5 years, from February 2019 until February 2024³.

TRADE Hub Indonesia: Research Framework

The TRADE Hub in Indonesia is focusing on two agricultural commodities - palm oil and coffee, as well as wild species trade.

The palm oil and coffee industries have been leading economic sectors in Indonesia, with huge rural development potential. However, various challenges to achieve sustainable trade exist, such as how to minimize environmental and socio-economic trade-offs, especially in forest landscapes, and their rural communities. Thus, **the goal of the TRADE Hub in Indonesia is to make the global trade of palm oil and coffee deliver benefits for the country while reducing impacts to high-risk forested landscapes and their rural communities.**

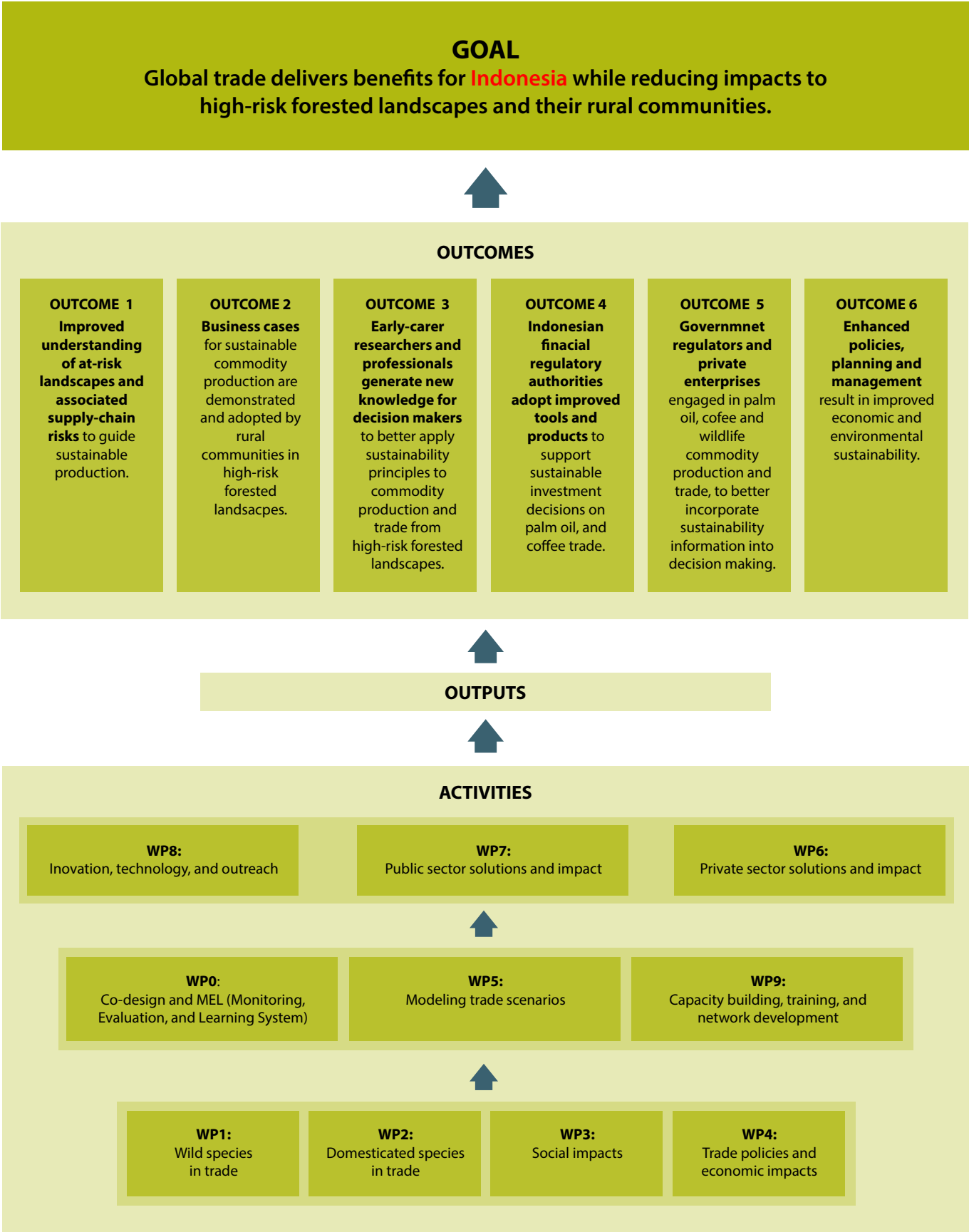
In addition, the project is expected to enhance information related to the legal and illegal trade of wildlife in Indonesia, particularly the most exported groups of species. The project will contribute to address illegal trade, and make legal trade more sustainable.

Towards the goal of TRADE Hub Indonesia, there are six expected outcomes and ten work packages.

¹ <https://www.ukri.org/news/new-global-research-hubs-to-tack-le-complex-development-challenges/>

² <https://www.unep-wcmc.org/>

³ <https://trahub.earth/>



Research Framework of TRADE Hub Indonesia



Research locations of TRADE Hub Indonesia

Research location

TRADE Hub research is conducted at national and sub-national level. There are four prioritized landscapes as main focus of several research aspects on TRADE Hub Indonesia, those are:

- 1. Aceh Province:** Study on high-risk landscape assessment, and case study of socio-economic and environmental impacts from international trade of coffee (**WP2** and **WP3**).
- 2. Lampung Province:** Study on high-risk landscape assessment, case study of socio-economic and environmental impacts from international trade of coffee, and business case development for smallholders towards sustainable coffee trade (**WP2** and **WP3**).
- 3. Central Kalimantan Province:** Study on high-risk landscape assessment, case study of socio-economic and environmental impacts from international trade of palm oil, and business case development for smallholders towards sustainable palm oil trade (**WP 2** and **WP3**).

- 4. Papua Barat Province:** Study on high-risk landscape assessment, also engagement and capacity building for financial authority, government, and private sector towards sustainable palm oil trade (**WP2, WP4, WP6, WP7, and WP9**).

Research Team

Six organizations join TRADE hub Indonesia:

- 1. Center for International Forestry Research (CIFOR)** for WP1, WP2 oil palm, WP3, WP5, WP6, WP7, dan WP8.
- 2. World Agroforestry (ICRAF)** for WP5
- 3. Wildlife Conservation Society (WCS)** for WP1 and WP2 coffee
- 4. IPB University (Institut Pertanian Bogor)** for WP9
- 5. Research Center for Climate Change University of Indonesia (RCCC UI)** for WP3 and WP4
- 6. Universitas Lampung (UNILA)** for WP2 coffee

Country coordinator of TRADE Hub Indonesia

Professor Herry Purnomo (CIFOR/IPB University)

Contact person TRADE Hub Indonesia

Sonya Dyah Kusumadewi (CIFOR)
s.dyah@cgiar.org

Partner organizations



cifor.org/tradehub



Center for International Forestry Research (CIFOR)

CIFOR advances human well-being, equity and environmental integrity by conducting innovative research, developing partners' capacity, and actively engaging in dialogue with all stakeholders to inform policies and practices that affect forests and people. CIFOR is a CGIAR Research Center, and leads the CGIAR Research Program on Forests, Trees and Agroforestry (FTA). Our headquarters are in Bogor, Indonesia, with offices in Nairobi, Kenya; Yaounde, Cameroon; Lima, Peru and Bonn, Germany.

